

Installation Manual

BMW X3 5DR
BMW-X3-5-B



Shades



Side Shades



Port Shades



Tailgate Shades

Fixing Clips



CL-M02 x 4



CL-M13 x 4



CL-M14 x 1



Installation

BMW X3 5DR
BMW-X3-5-B

Components Needed



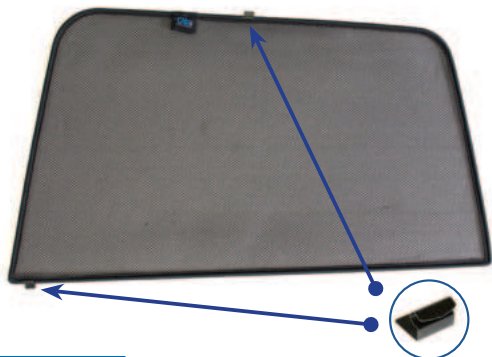
Side Shades



CL-M13 x 4

Side Shade Installation

STEP 1



STEP 2



STEP 3



STEP 4



STEP 5



STEP 6



Installation

BMW X3 5DR
BMW-X3-5-B



Side Shade Installation

STEP 7



*View from the other side.
Ensure top clip is behind the rubber seal*

STEP 8



Ensure clips are secure

STEP 9



Repeat this whole process for the other side.

Installation

BMW X3 5DR
BMW-X3-5-B

Components Needed



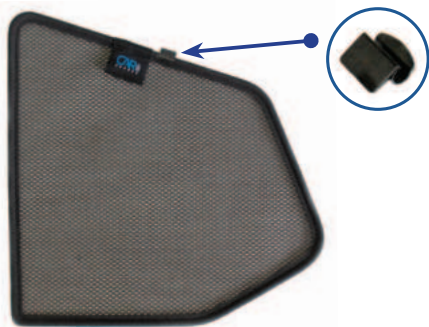
Port Shades



CL-M02 x 2

Port Shade Installation

STEP 1



STEP 2



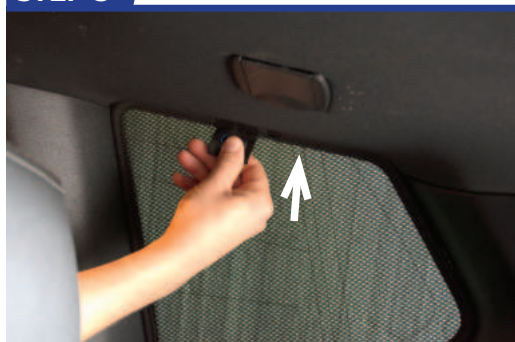
STEP 3



STEP 4



STEP 5



STEP 6



Repeat this whole process for the other side.

Installation

BMW X3 5DR
BMW-X3-5-B

Components Needed



Tailgate Shades



CL-M14 x 1



CL-M02 x 2

Tailgate Shade Installation

STEP 1



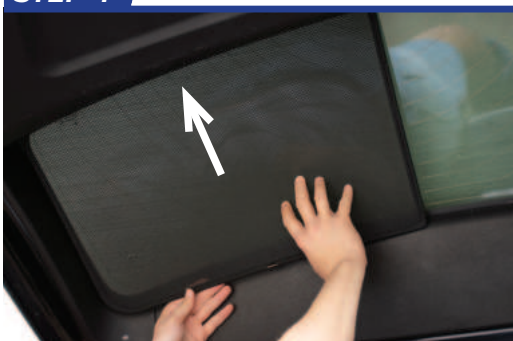
STEP 2



STEP 3



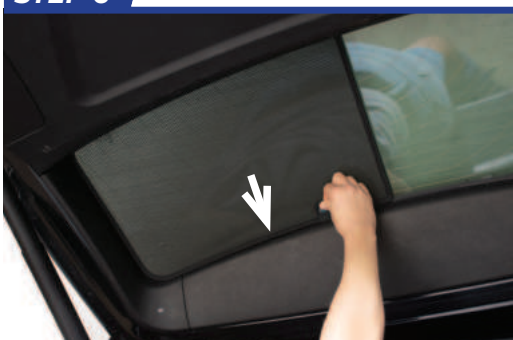
STEP 4



STEP 5



STEP 6



Installation

BMW X3 5DR
BMW-X3-5-B



Tailgate Shade Installation

STEP 7

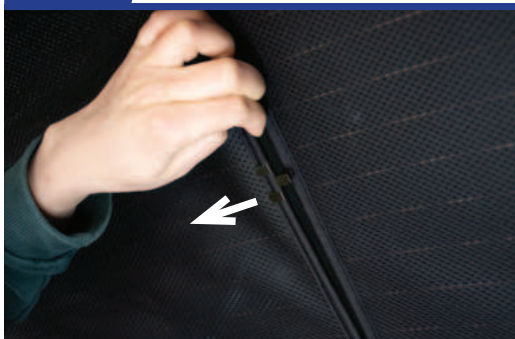


Repeat this whole process for the other side.

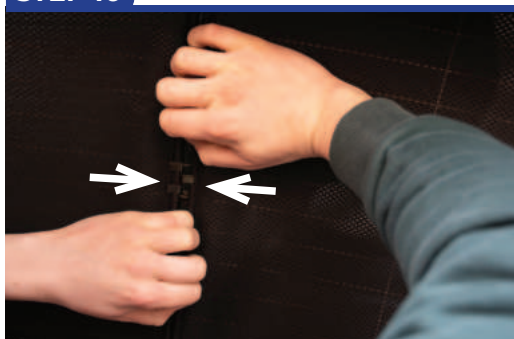
STEP 8



STEP 9



STEP 10



STEP 11

