

Installation Manual

BMW 3 SERIES (F30)
BMW-3SER-4-C-18



Shades



Side Shades

Fixing Clips



CL-M02 x 2



CL-M13 x 4



Installation

BMW 3 SERIES (F30)
BMW-3SER-4-C-18

Components Needed



Side Shades



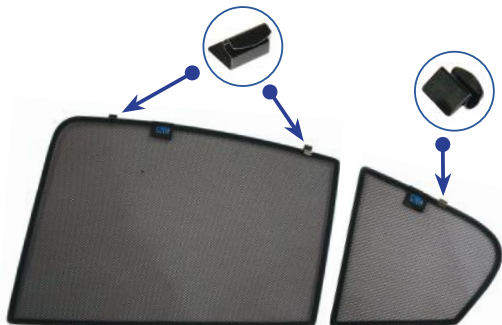
CL-M02 x 2



CL-M13 x 4

Side Shade Installation

STEP 1



STEP 2



STEP 3



STEP 4



STEP 5



STEP 6



Installation

BMW 3 SERIES (F30)

BMW-3SER-4-C-18



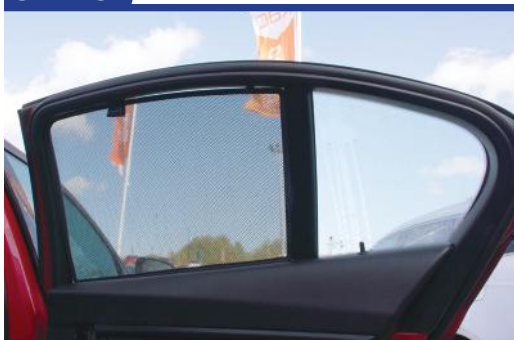
Side Shade Installation

STEP 7



View from the other side with window down

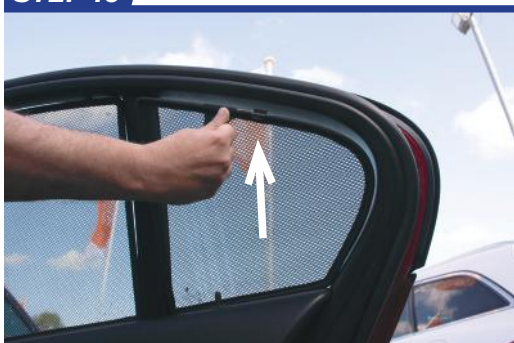
STEP 8



STEP 9



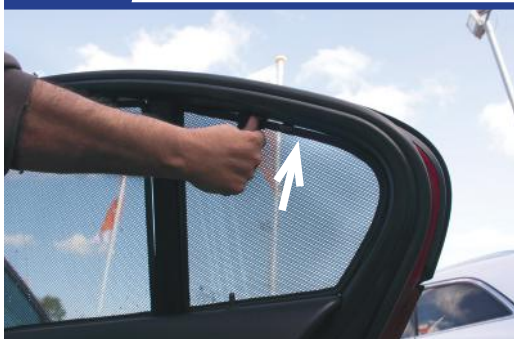
STEP 10



STEP 11



STEP 12



Installation

BMW 3 SERIES (F30)

BMW-3SER-4-C-18



Side Shade Installation

STEP 13



STEP 14



Repeat this whole process for the other side.