



# RANGE ROVER SPORT | SUV

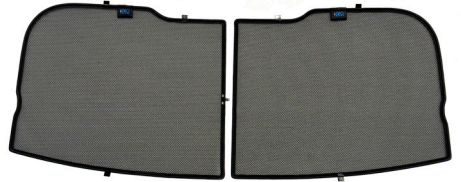
LRO-RRS-5-C



### Included Components:



Side Window Shades



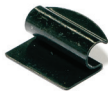
Tailgate Shades



Port Window Shades



M01 x2



M02 x4



M03 x2



M04



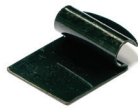
M05



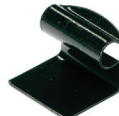
M09



M11



M12 x6



M13 x2



M14 x1



P01



P02



CLEANER



TRIM TOOL

# RANGE ROVER SPORT | SUV

LRO-RRS-5-C

## Side Windows

Side Window Shades - x2

M02

M02

M03

M01

CLIP PLACEMENT



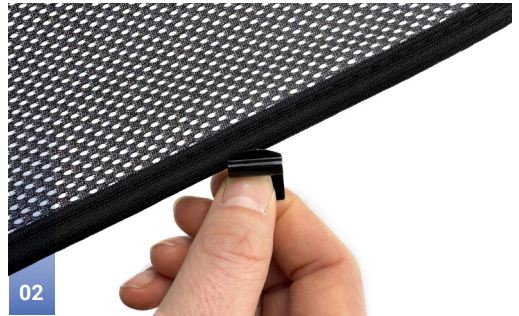
M02 - x2



M03 - x1



M01 - x1







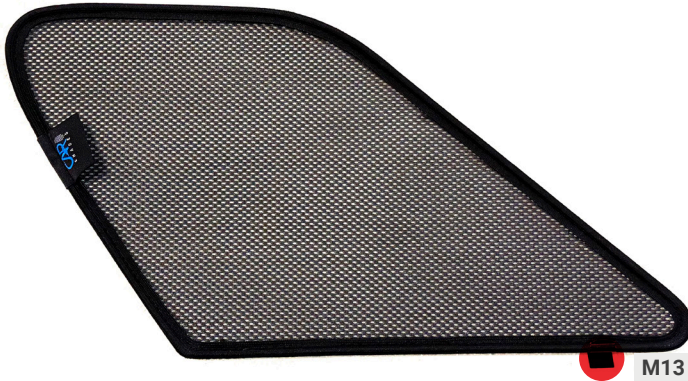


**RANGE ROVER SPORT | SUV**  
**LRO-RRS-5-C**

**Port Windows**

Port Window Shades - x2

CLIP PLACEMENT



M13- x1



**Position clip in order for the shade to rest on the shelf of interior trim.**



Push the shade towards the rear of the car to fill the window aperture.



Pull the front edge forward but do not push flush to the glass.



The Shade should look as shown in the image.

# RANGE ROVER SPORT | SUV

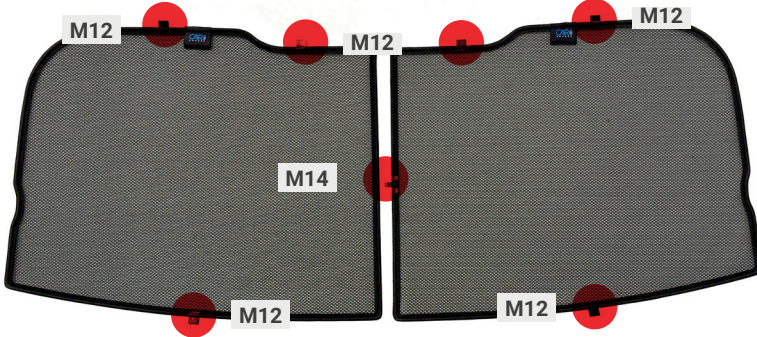
LRO-RRS-5-C

## Tailgate Window

CLIP PLACEMENT



Tailgate Shades - x2



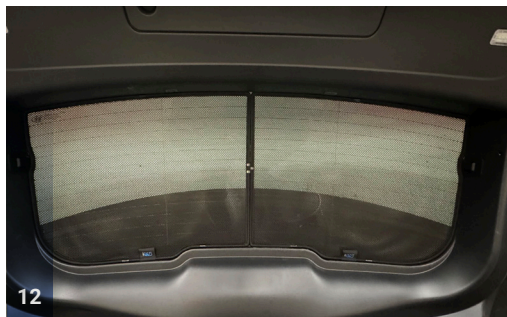
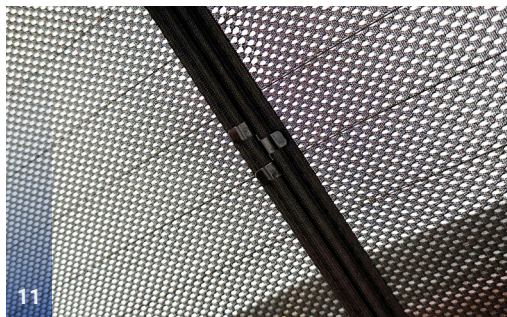
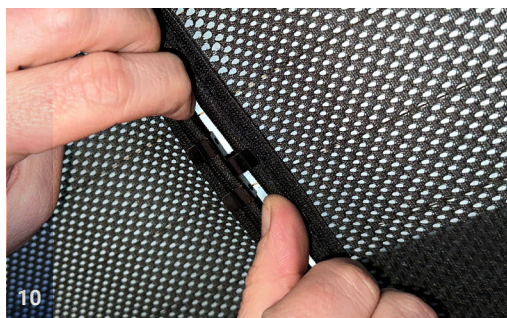
M12 - x6



M14 - x1











# CAR SHADES



[www.carshades.com](http://www.carshades.com)