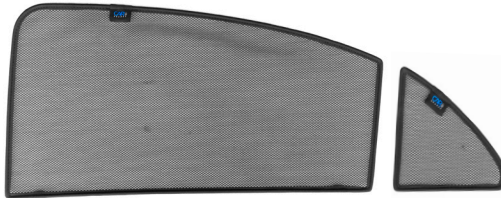
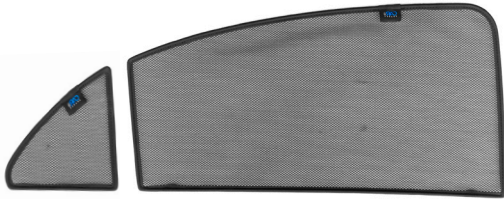


# Installation Manual

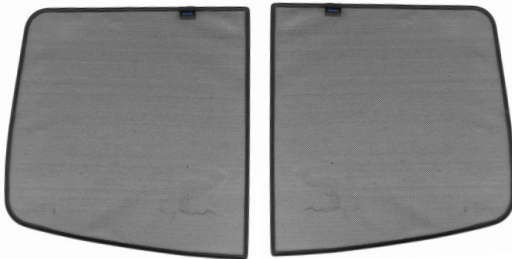
MERCEDES BENZ S CLASS 4DR  
MB-SCLSLWB-4-C



## Shades



Side Shades



Tailgate Shades

## Fixing Clips



CL-M13 x 6



CL-M12 x 2



CL-M03 x 4



CL-M04 x 4



CL-M14 x 2



# Installation

MERCEDES BENZ S CLASS 4DR  
MB-SCLSLWB-4-C

## Components Needed



Side Shades



CL-M04 x 4



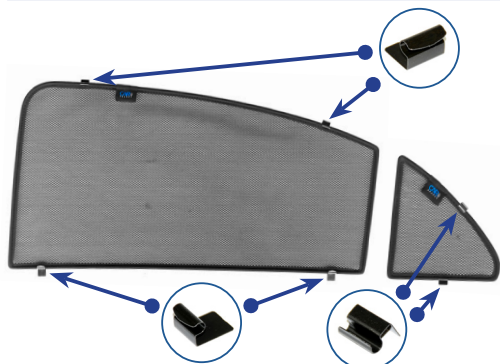
CL-M03 x 4



CL-M13 x 4

## Side Shade Installation

### STEP 1



### STEP 2



### STEP 3



### STEP 4



### STEP 5



### STEP 6



# Installation

MERCEDES BENZ S CLASS 4DR  
MB-SCLSLWB-4-C



## Side Shade Installation

### STEP 7



### STEP 8



### STEP 9



### STEP 10



### STEP 11



### STEP 12





# Installation

MERCEDES BENZ S CLASS 4DR  
MB-SCLSLWB-4-C



## Side Shade Installation

### STEP 13



*View from the other side. Ensure clips fit between seals*

### STEP 14

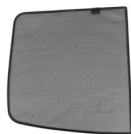


*Repeat this whole process for the other side.*

# Installation

MERCEDES BENZ S CLASS 4DR  
MB-SCLSLWB-4-C

## Components Needed



Tailgate Shades



CL-M12 x 2



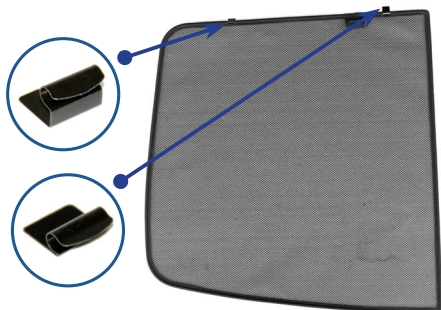
CL-M13 x 2



CL-M14 x 2

## Tailgate Shade Installation

### STEP 1



### STEP 2



### STEP 3



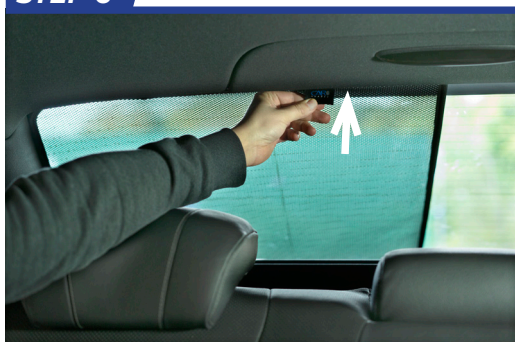
### STEP 4



### STEP 5



### STEP 6



# Installation

MERCEDES BENZ S CLASS 4DR  
MB-SCLSLWB-4-C



## Tailgate Shade Installation

### STEP 7

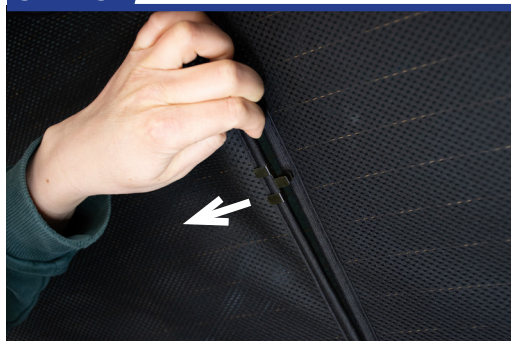


Repeat this whole process for the other side.

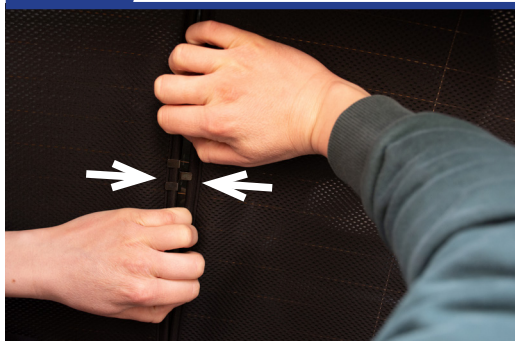
### STEP 8



### STEP 9



### STEP 10



### STEP 11

