

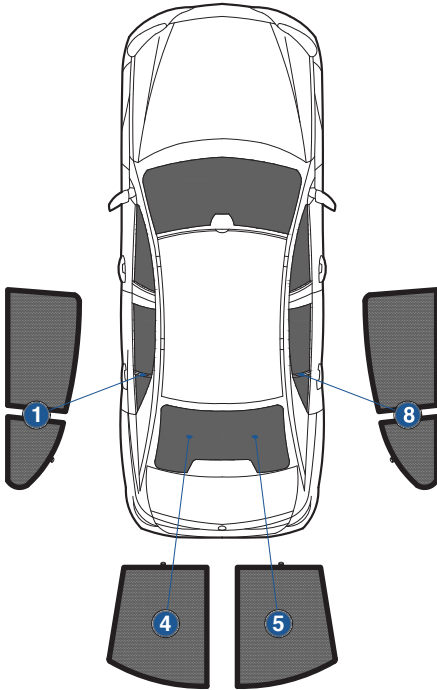
# Installation Manual

**MERCEDES BENZ E-CLASS 4DR**  
**MB-ECLS-4-C**



## COMPONENTS INCLUDED

## SHADES



## FIXING CLIPS



**CL-M04 x 4**



**CL-M12 x 2**

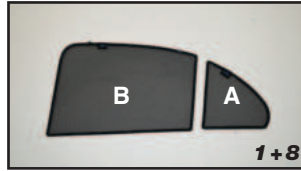


**CL-M14 x 1**

# Side Shade (A) Installation

MERCEDES BENZ E-CLASS 4DR  
MB-ECLS-4-C

## COMPONENTS NEEDED:



### STEP #1

POSITION THE SIDE SHADE



### STEP #2

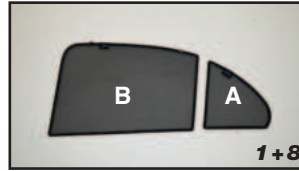
ENSURE SECURELY FITTED IN PLACE



# Side Shade (B) Installation

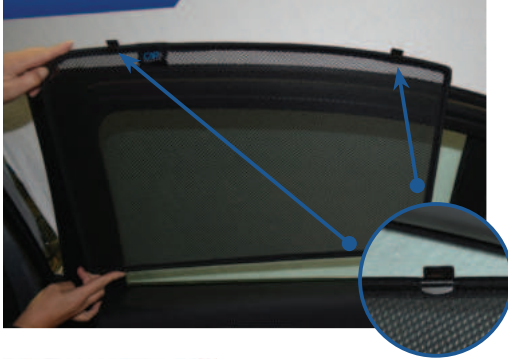
MERCEDES BENZ E-CLASS 4DR  
MB-ECLS-4-C

## COMPONENTS NEEDED:



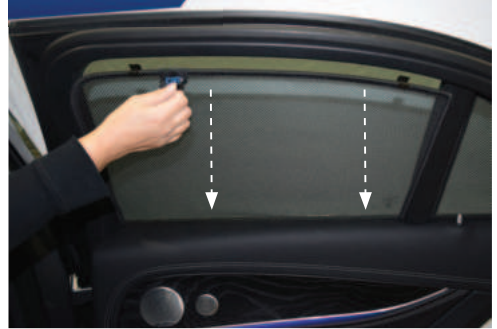
### STEP #1

ATTACH CLIPS ON SHADE EDGES



### STEP #2

POSITION THE SIDE SHADE



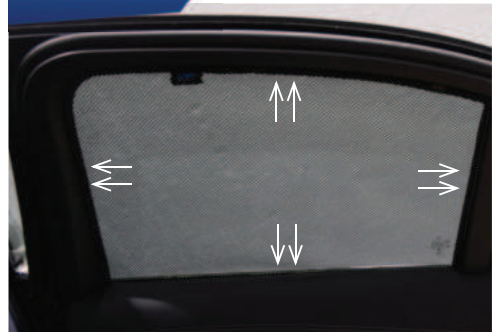
### STEP #3

ATTACH SIDE SHADE BEHIND CLIPS



### STEP #4

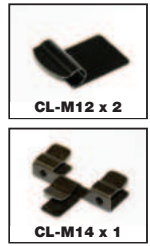
ENSURE SECURELY FITTED IN PLACE



# Rear Shade Installation

MERCEDES BENZ E-CLASS 4DR

## COMPONENTS NEEDED:



### STEP #1 ATTACH CLIPS ON SHADE EDGES



### STEP #2 POSITION THE REAR SHADE



### STEP #3 INSERT CLIPS BEHIND INTERIOR TRIM



### STEP #4 REPEAT THE PROCESS ON OTHER SHADE



### STEP #5 ENSURE SECURELY FITTED IN PLACE

