

Installation Manual

NISSAN NAVARA 4DR
NIS-NADC-4-C-18



COMPONENTS INCLUDED

FIXING CLIPS



CL-M12 x 2



CL-M05 x 2



CL-T01 x 1

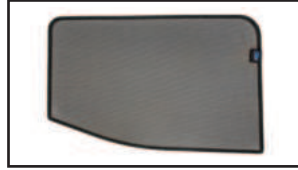


Side Shade Installation

NISSAN NAVARA 4DR

NIS-NADC-4-C-18

COMPONENTS NEEDED:



STEP #1

INSERT M05 CLIP INTO POSITION
CIRCLED



STEP #2

PEEL BACK THE RUBBER STRIP USING
THE TOOL



STEP #3

INSERT THE M05 CLIP AND PUT THE
RUBBER STRIP BACK INTO POSITION



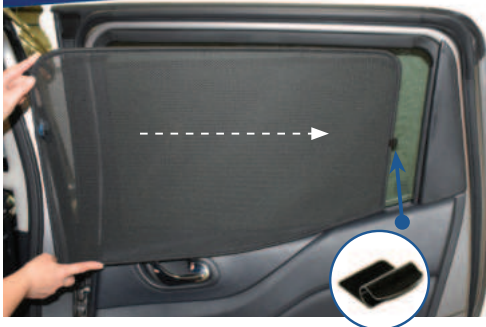
STEP #4

THIS IS WHAT IT WILL LOOK LIKE
ONCE IN POSITION



STEP #5

POSITION THE SIDE SHADE



Side Shade Installation

NISSAN NAVARA 4DR
NIS-NADC-4-C-18

STEP #6

ATTACH SIDE SHADE BEHIND CLIPS



STEP #7

ENSURE SECURELY FITTED IN PLACE

