

INSTALLATION, USE, AND MAINTENANCE MANUAL

CARGOBLOCK® ND

**Cargo Door Protection for
Commercial Vehicles**

Ean Code **8056814560522**

Product Code **0001070001002**

Application:

FIAT Fiorino

PEUGEOT Bipper





Fiat Fiorino



Peugeot Bipper

A - INTRODUCTION

Objective of the Manual

This manual aims to provide detailed guidelines and essential information for the correct installation of the CargoBlock ND anti-theft system on the vehicle.

It is recommended to carefully follow all the procedures outlined, which are crucial for ensuring a quick and optimal installation.

Warning

Before proceeding with the installation, it is essential to verify that the rear and side doors are properly aligned and that the images in this manual match those of the vehicle on which the system is to be installed.

ST Automotive disclaims any responsibility for any damage to the vehicle resulting from incorrect installation or failure to follow the instructions.

B - GENERAL INSTRUCTIONS

Installation of CargoBlock ND

The installation of CargoBlock ND has been rigorously tested on vehicles following the mounting instructions provided in the attached manual.

Product Warranty Registration

To activate the product warranty, it is mandatory to register on the website: <https://web.starblock.it/garanzia-prodotto/>

C - TECHNICAL FEATURES

CargoBlock ND represents an innovative protection system for the doors of commercial vehicle cargo areas, designed for installation without the need for drilling or structural modifications. Made with pre-formed and pre-drilled stainless steel plates, it ensures maximum reliability.

Thanks to its advanced design and cutting-edge technology, CargoBlock ND is practical and easy to install. It comes with dedicated mounting plates for each vehicle model, allowing installation on the original lock mounting points without the need for additional holes or modifications.

CargoBlock ND is equipped with the proprietary StarBlock® lock, which incorporates advanced technology and a key with a non-duplicable profile.

D – PACKAGE CONTENTS

- 1 Welcome kit
- 2 Reflective sticker sets for rear and side doors
- 2 Window decals
- 2 Keys + 1 emergency key
- 2 Keychains



Accessories:



2 hexagonal screws 6x16mm



1 M8x25 locking bolt
1 M6x25 locking bolt

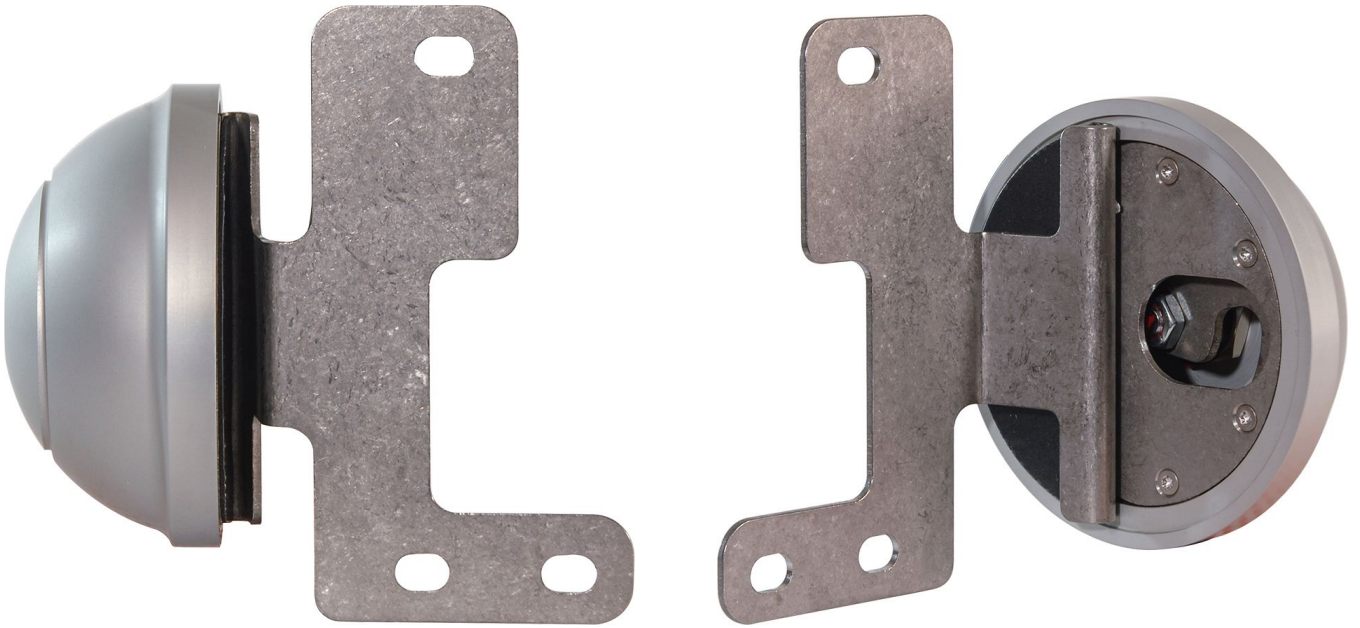
Equipment required for installation:



Torx wrench size 40



5 mm Hexagonal Wrench



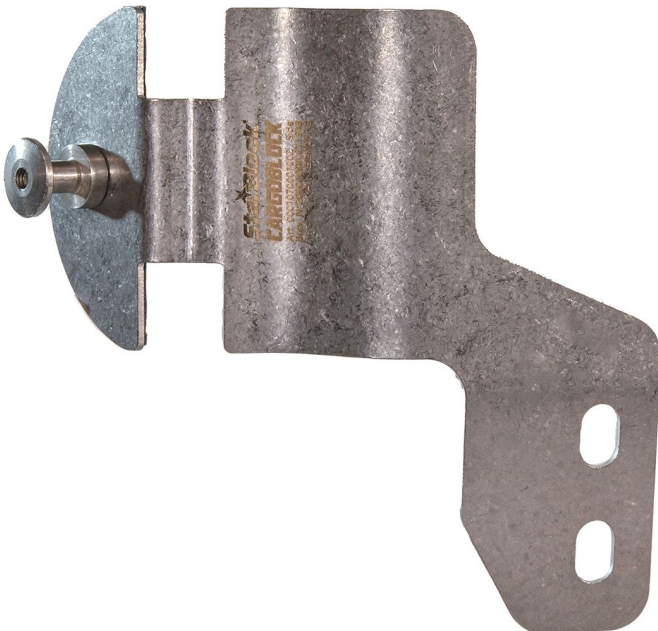
1 - Left rear door plate



2 - Right rear door plate



3 - Side sliding door plate

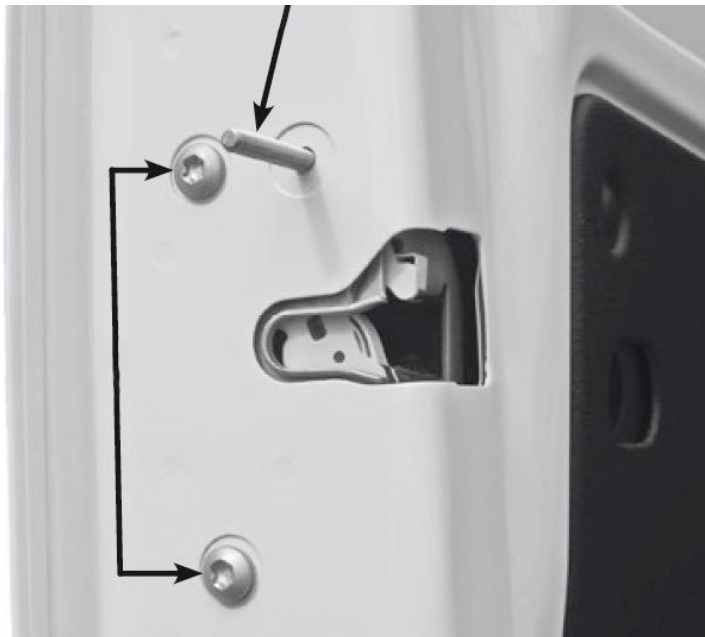


4 - Side door frame plate

E – INSTALLATION GUIDE [Rear Door]



Remove the Torx screw that secures the lock.



Screw in the supplied stud to prevent the lock from detaching;
then unscrew the two Torx screws that secure the lock.

E – INSTALLATION GUIDE [Rear Door]



Place the plate (as shown in the image) in alignment with the lock mounting holes.

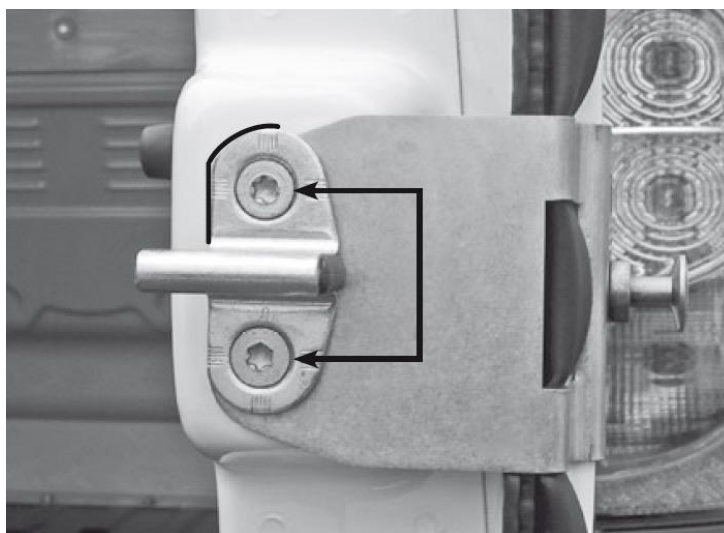


Secure the plate with the original Torx pin and the provided hex pin, avoiding tightening them to allow for the final adjustment of the plate. Unscrew the locking pin and screw in the provided hex pin; finally, tighten all the pins.

E – INSTALLATION GUIDE [Rear Door]

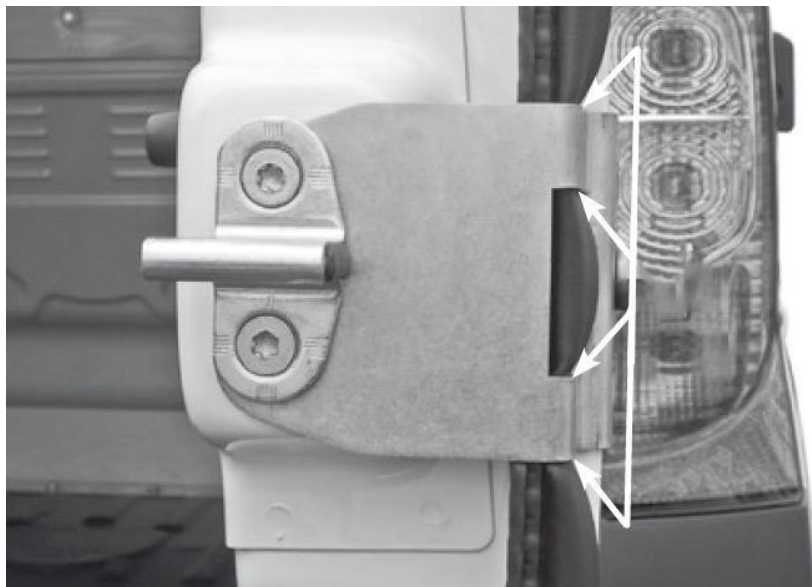


Before unscrewing the hook, mark the original position of the stopper with a marker to facilitate the reassembly process; then unscrew the Torx screws securing the hook.



Place the plate on the tailgate, aligning it with the hook mounting holes; then position the hook on the plate, aligning it with the line previously marked with the marker. Secure them with the original pins, avoiding tightening to allow for final adjustment.

E – INSTALLATION GUIDE [Rear Door]



Ensure that during the plate fastening process, the gasket is not pinched between the edges of the tailgate and the plate.



Bring the two doors closer and verify that the plates are aligned. Once the correct alignment is confirmed, proceed with tightening all the hook screws.

E – INSTALLATION GUIDE [Rear Door]

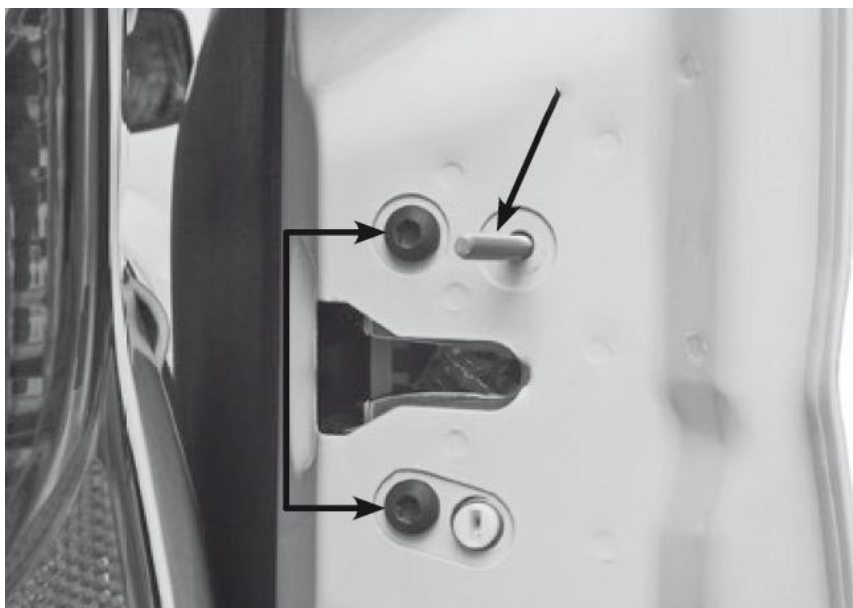


Final installation of CargoBlock ND on the rear door of the vehicle

E – INSTALLATION GUIDE [Side Door]



Remove the Torx screw that secures the sliding door lock.

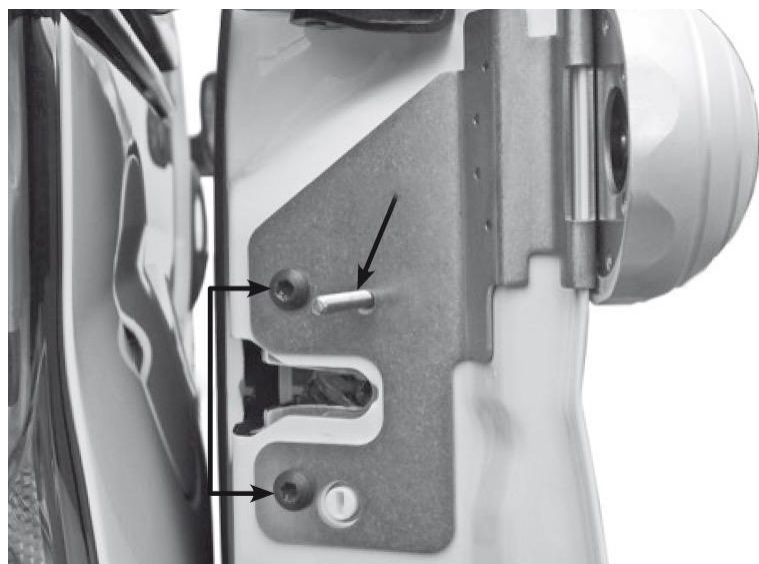


Screw in the supplied stud to prevent the lock from detaching; then unscrew the two Torx screws that secure the lock.

E – INSTALLATION GUIDE [Side Door]

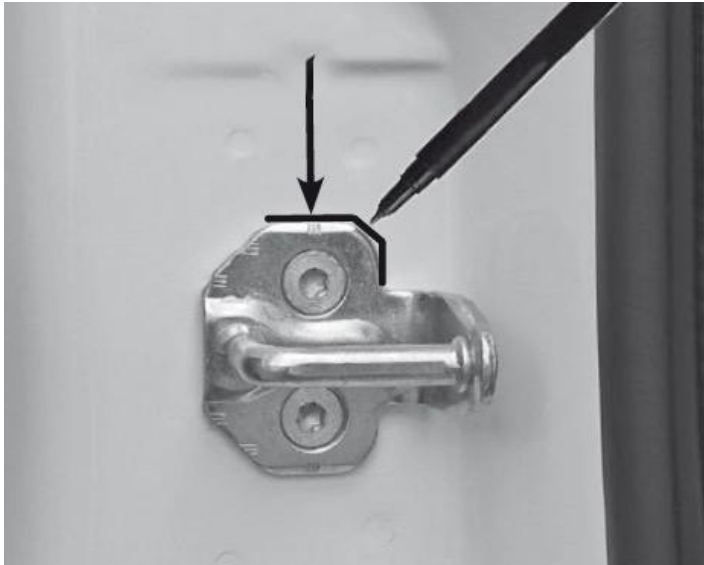


Place the side door plate (as shown in the image) aligning it with the lock mounting holes.

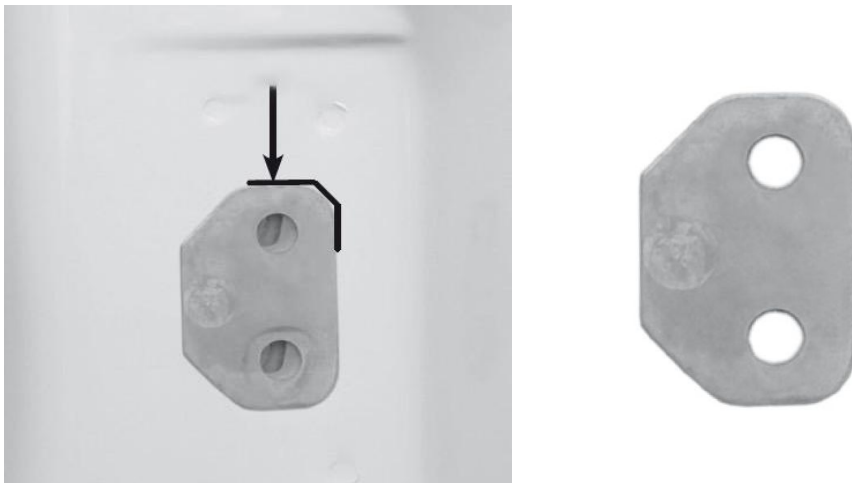


Secure the plate with the two supplied Torx screws, avoiding tightening to allow for final adjustment. Remove the stud and reattach the original Torx screw; finally, tighten all the pins.

E – INSTALLATION GUIDE [Side Door]

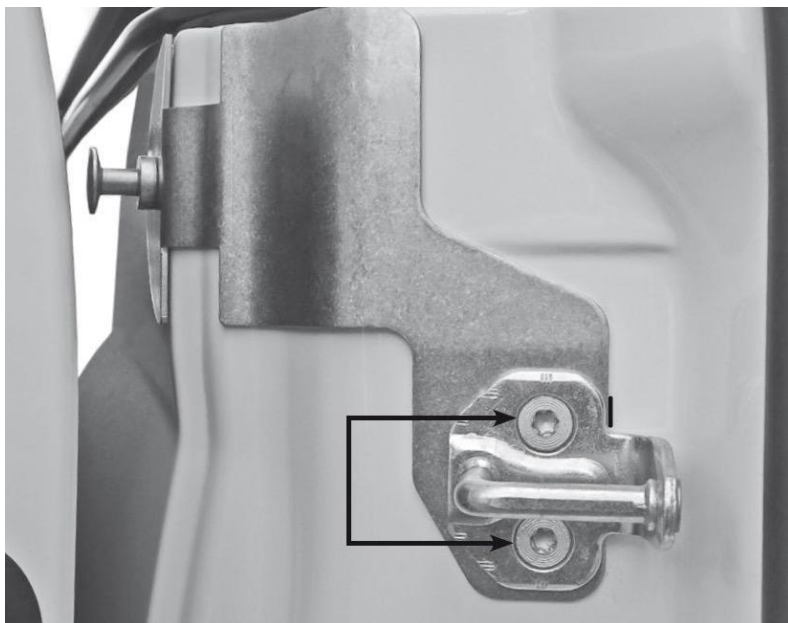


Before unscrewing the hook, use a marker to trace the original position of the stopper to facilitate reassembly; then unscrew the two Torx screws securing the hook.



After unscrewing the hook, remove the spacer underneath and discard it, to allow the bracket to perfectly adhere to the pillar and ensure the correct closure of the sliding door.

E – INSTALLATION GUIDE [Side Door]



Place the plate on the pillar, aligning it with the hook mounting holes. Position the hook on the plate, aligning it with the line previously drawn with the marker. Secure them with the original pins, avoiding tightening them to allow for final adjustment.

Socchiudere la porta scorrevole ed accertarsi che le due piastre siano allineate. Una volta verificato il corretto allineamento, procedere con il serraggio di tutte le viti del gancio.

E – INSTALLATION GUIDE [Side Door]



Final installation of CargoBlock ND on the side door of the vehicle.

F – USE AND MAINTENANCE

HOW TO USE CARGOBLOCK

1. **Opening CargoBlock ND:**

Insert the key into the lock of the rear or side doors. Either side of insertion is suitable.

Turn the key 90° clockwise. In this position, the key cannot be removed from the lock.

2. **Closing CargoBlock:**

Close the vehicle doors properly.

Turn the key counterclockwise.

Then remove the key from the lock.

MAINTENANCE OF CARGOBLOCK

1. **Periodic Cleaning:**

Remove any dust deposits from the product and lock.

Apply a dry lubricant spray to the lock and mechanism.

2. **Maintenance Frequency:**

It is recommended to perform maintenance every six months.

Carry out more frequent maintenance if used in particularly dusty, sandy, or dirty environments.

3. **Additional Protection:**

If the vehicle is used on muddy roads, it is recommended to use the anti-mud device to protect the lock.



ST Automotive Srl
Ss 96 Km 119
70026 Modugno (BA)
T.+39 080 2143503
info@starblock.it

